

# Case Study

## Fensterfabrik Albisrieden Secures On-Time Deliveries in Multi-Site Operations



### INDUSTRY

Window Manufacturing & Constructions

### CHALLENGE

Lack of production visibility, large data variety, paper-based processes, multi-site operations

### IMPLEMENTATION TIME

**3 months** (From Kick-off to Go-Live)

### RESULTS

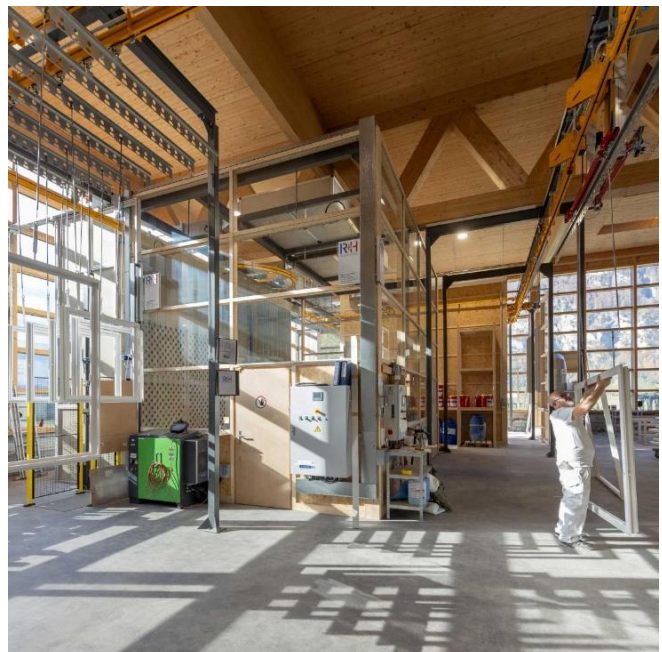
- ↑ **35% More** On-Time Deliveries
- ↓ Significant **reduction in paper usage**
- + **Cross-site** collaborations

## The Manufacturer

Fensterfabrik Albisrieden AG specializes in producing high-quality windows, known for their precision and durability.

As part of a multi-location operation, the company manages both the assembly of window components and the production of individual parts.

To maintain continuous improvement and customer satisfaction, Fensterfabrik Albisrieden recognized the need for a more efficient and transparent production system.



## The Challenges

### Lack of Visibility into Production Processes

Tracking production progress relied on manual methods, such as daily walkthroughs and paper-based documentation. This made it challenging to get real-time updates on order statuses, leading to inefficiencies and delays.

### Complexity in Scheduling and Prioritization

The absence of a structured system for prioritizing tasks added to the complexity of managing production. Critical jobs were often delayed because there was no reliable way to identify and focus on the most important tasks, especially during unexpected changes in production schedules.

### Complexity in Product Data Management

The products come in a vast range of sizes, materials, and styles, making it difficult to manage production data effectively using article-based tracking. This variability often led to disorganized workflows and challenges in aligning resources.

### Limited Data Accessibility

Employees lacked easy access to up-to-date information, as production data was stored in physical formats, making it harder to maintain consistency across teams and locations.

## The Solution

Fensterfabrik Albisrieden AG implemented the planeus planning system with key features and outcomes included:

### Process-Centric Data Management

planeus introduces a goal-oriented planning system, enabling the company to manage workflows and resources more efficiently despite the wide variety of their products.

### Real-Time Production Monitoring

The system provides a live overview of future production progress, allowing managers to track orders and workstation statuses effortlessly.

### Streamlined Task Management

The system allows for easy and digitalized import of customer data, orders, and special requirements, ensuring tasks can be adjusted dynamically without disrupting workflows.

### Centralized Access to Data

By equipping workstations with tablets and PCs, employees can access the necessary information anytime, improving coordination and reducing errors.

### Visualized Workload Distribution

With clear visual representations of workstation capacities, the company can now improve resources allocation and prevent bottlenecks.

## The Results

Fensterfabrik Albisrieden AG saw significant improvements after implementing planeus, including:

- **On-Time delivery rate increased by 35%**
- **Simplified data management**
- **Cross-location integration**
- **Quicker training for planners and workers**

*“planeus has transformed the way we manage production. With a more transparent and efficient system, we’ve seen remarkable improvements in delivery reliability and overall performance. Its process-centric and multi-location capabilities have been game-changers for us.”*

*Michael Wirth, Production Manager*

## Looking Ahead

The company continues to leverage planeus to optimize its production processes further. By embracing a digital-first approach, the company is well-positioned to maintain its high-quality standards while driving operational excellence across all locations.

---

» [Learn More about how planeus helps optimize your production.](#)

---

### Contact

th data GmbH  
Paul-Lincke-Ufer 34  
10999 Berlin, Germany  
+49 30 - 28 44 99 80  
[www.thdata.de](http://www.thdata.de)  
[info@thdata.de](mailto:info@thdata.de)